

---

# KS2

4.2.2021

INFORMATION FOR KEY STAGE TWO, WOODLAND HEIGHTS

## Coming up in KS2 this term

### KS2 DATES

**Week beginning 8 Feb:** Talent Show sign-ups  
*Mrs Neethling will be on the KS2 playground before school for sign-ups.*

**Fri 12 Feb:** Valentine's Day civvies R10 (HS fundraiser)

**25 & 26 Feb:** (date TBC) Y6 Leadership Development days (on site)

**Mon 22 March:** Public holiday – school closed

**23-25 March:**  
-KS2 Maths Enrichment Week (the COVID 'lite' version this year)  
-Parent-Teacher appointments via Zoom/Meet

**Wed 24 March:** Y6 Leaders Assembly (via video for Y6 parents)  
\*weather dependent

**Fri 26 March:**  
- KS2 Dress Up day: Ancient Civilisations  
- Last day of Term 1  
- School finishes at normal Friday time 13:30

### KS2 TALENT SHOW

In the last week of Term 2 we will hold our annual KS2 Talent Show. This year we won't be able to gather together to watch a live performance, so as a Key Stage we'll watch video performances instead.

If your child would like to take part, he/she must sign up with me next week. I will be on the KS2 playground each morning before school starts. I won't be accepting parent email requests – your child must be brave enough to sign up themselves! If your child signs up, I'll send you an email to confirm details.

*If there is a song involved, please ensure that the lyrics are suitable for primary school children.*

### VALENTINE'S DAY EVENTS

To help support our HS Fundraising Team, we'll be having a civvies day and cake sale deliveries on Friday 12<sup>th</sup> February.

#### Civvies Day

Bring R10 and come in civvies on Friday 12<sup>th</sup> February.

Themed outfits would be great, but any (sensible) civvies will be welcome.

---

Online Bake Sale (desserts) – order online by 10<sup>th</sup> February.

Pre-order using this link [here](#).

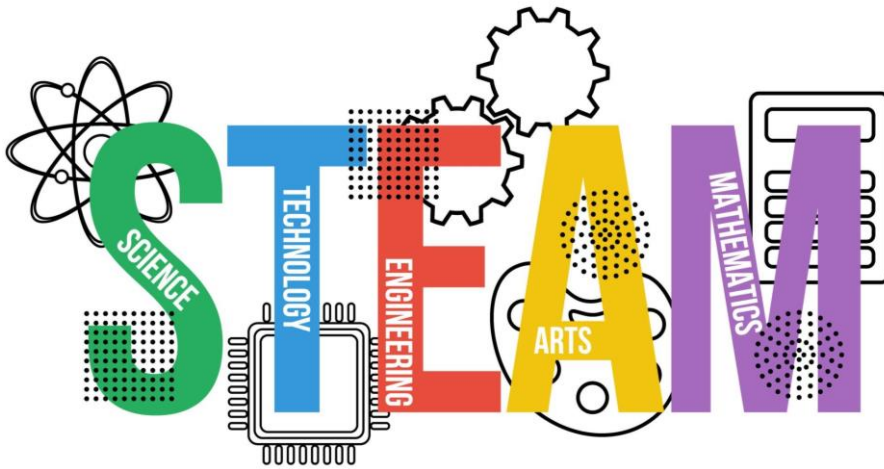
The Year 12 students will deliver the goodies to classes on **Friday 12 February**.

**Only cash payments will be accepted** which will be collected on Friday when the treats are delivered. Please send **the correct amount** in cash.

Please note that orders are only available until **Wednesday, the 10th of February** and there is limited stock so please order as soon as possible. The treats are being prepared by the Year 12 students so when the items are sold out, they are sold out! They won't be able to accept late orders or requests for additional items.

## STEAM CHALLENGE

This year we are focusing on STEAM across the school.



Mr Tait in KS3 has set us all a STEAM challenge!  
[Click here to watch the video](#) and find out more about it.

We'd love for families to get involved together.  
Explore, investigate, get creative!  
Send us your pictures or videos so we can share in the fun and learn from each other.

## KS2/ISCT OUTREACH

Last year we pressed pause on our community and environmental outreach initiatives but we're happy to report that we will be collecting the following items again:

### Eco bricks

We have found a drop-off point and delivered a mountain of pre-COVID ecobricks collected last year.

We'd love to get our ecobrick collection up and running again. Read about [how to make an ecobrick here](#).

### Clothing donations (U-Turn)

Please donate clean second hand clothes. There is a white, clearly labelled bin near reception for donations. Next week (Tues-Thurs) the HS Community Service portfolio are running a drive to promote this area of our outreach. The donations bin will be at the loggia entrance to make donating even easier!

### Tinned food

Although Food Forward is no longer working with schools, we are exploring a few well-run organisations to partner with.  
*TINS ONLY – no plastic or paper containers*

### Bread tags

[Bread tags](#) collected at Woodland Heights will be sent down to the Struben campus.

---

## UNIFORM

- Children should be wearing the correct uniform each day. PE kit should be worn on PE day, and formal uniform on the other days.
- Please ensure that your child wears a hat to school every day. We have a 'no hat, no play' policy at break times.
- For those girls struggling with the skirt design/fit, please remember that the chino shorts are an option.
- We have a fantastic 'Nearly New' [uniform shop](#) run by the PTA.

## KS2 TIMINGS

### Mornings

7:15-7:40 Morning temperature check. *Playground supervision starts at 7:30*  
7:40 Children go to classrooms

### Afternoons

#### **Mon-Thurs**

14:10 Year 5 & 6

14:15 Year 3 & 4

#### **Fri**

13:30 Year 5 & 6

13:35 Year 3 & 4

*Siblings meet up at classroom – please collect for the **later** finish time so you don't block the drive through system.*



# KS2 GARDEN PROJECT

We need volunteers to help with:

### **Garden design**

*Waterwise plants; good eye for making best use of the space*

### **Gardening knowledge**

*Advice and help for choosing plants, zones, seasons*

### **Time**

*Initial planting; regular or ad hoc gardening during the year*

### **Eco-friendly & repurposing suggestions**

*Ecobricks, rain chain, homemade garden décor or suggestions for KS2 design projects, sustainable & environmentally-friendly practices*

### **Donations**

*Soil, waterwise plants, succulent cuttings, natural design elements (rocks, pebbles, wood slices, pavers)*

