

KS2

11.2.2021

INFORMATION FOR KEY STAGE TWO, WOODLAND HEIGHTS

Valentine's reminder from the
High School Fundraising Portfolio:

- ♥ Don't forget to bring a cash payment for your online cake sale orders
- ♥ R10 for civvies day

KS2 DATES

Week beginning 8 Feb: Talent Show sign-ups.

Mrs Neethling will be on the KS2 playground before school for sign-ups. Parents will be contacted next week.

Fri 12 Feb: Valentine's Day civvies R10 (HS fundraiser) & cake sale deliveries

Mon 15 Feb: Aftercare sign-up opens on *Parent Portal* (web)

Wed 17 Feb: 13:00 Garden Project meeting – all welcome!

Mon 22 Feb: Aftercare and Enrichment activities begin

23-25 March:

- No Enrichment Days this week
- KS2 Maths Week (the COVID 'lite' version this year)
- Parent-Teacher appointments via Zoom/Meet

Wed 24 March: Y6 Leaders Assembly (via video for Y6 parents)
*weather dependent

Fri 26 March:

- KS2 Dress Up day: Ancient Civilisations

WELL DONE

At the end of last year, Gabriella (now Y5) was awarded the end of year trophy by her Cub Scout troop (1st Camps Bay) for having earned the Most Interest Badges in 2020. It was awarded to her in a ceremony at the Appleton Scout Centre on top of Signal Hill.

Gabriella is aiming to win it again this year to have her name engraved on the trophy **twice!**
Well done, Gabriella.



ONLINE LEARNING vs IN-SCHOOL

As of next week, we will no longer be offering online learning.

If you are able to motivate the need for your child to stay at home, please contact Mr Hunter (d.hunter@isct.co.za).

Work can still be sent on Google Classroom for families required to quarantine for COVID. This must be pre-arranged as we need advance notice to prepare these resources.

ECAs and Aftercare in KS2 this term

AFTERCARE TERM 1 2021

Pre-booked Aftercare with limited spaces.

Spaces limited due to social distancing and using indoor venues.

This includes children waiting for HS siblings or Music lessons.

Charge of R50/hr (in 30 min increments) will be billed to your school fees account.

Sign-up from Monday 15 Feb (9:00) is on a first come, first served basis.

How to book

You will need to log onto EdAdmin through the parent portal.

Click [here](#) for parent portal link.

You cannot book a spot via the EDANA app. Click on the **ECA tab** and follow the directions. You will need to sign up for each day that you would like your child to attend aftercare. If you are unable to sign up it means that aftercare is full on that day.

14:15-15:15 Homework Club
15:15-16:15 Outdoor play
(Friday start times adjusted accordingly)

Monday 22 February – Thursday 24 March.

As planned – but delayed - we are incorporating extracurricular activities into the timetable for this term with a streamlined selection of school-led **enrichment activities**. These will start in the week beginning 22 February, and will run for four weeks.

We hope to be able to add more options and have private ECAs as the year progresses.

Enrichment Activities in Term 1 will work differently to our 'old' programme of ECAs.

- **KS2 Enrichment Activities** will take place once a week and will form part of an extended school day (until 15:15).
- We aim to keep children in their class 'bubble' and reduce the number of different venues that children need to move between. Coaches and teachers will use the classroom or outdoor spaces.
- There will NOT be a sign-up for these activities – the whole class will participate in the same activity.

Extended school day for enrichment activities (23 Feb – 18 March)

14:15-15:15

Year 3 & Year 5 - Tuesdays
Year 4 & Year 6 - Thursdays

Children will be expected to stay for this extended school day each week.

We understand that there may be clashes with external enrichment activities that have already been booked and paid for. *If your child is not able to stay later on their class day due to a pre-arranged external activity, please let your class teacher know as soon as possible.*



KS2 GARDEN PROJECT

A HUGE thank you to those who have responded.

We'll be meeting at school on Wednesday 17th Feb at 13:00
to put our heads together
(figuratively speaking of course – masks & distancing!)

Anyone is welcome to come along to find out more.

We need volunteers to help with:

Garden design

Waterwise plants; good eye for making best use of the space

Gardening knowledge

Advice and help for choosing plants, zones, seasons

Time

Initial planting; regular or ad hoc gardening during the year

Eco-friendly & repurposing suggestions

*Ecobricks, rain chain, homemade garden décor or suggestions for
KS2 design projects, sustainable & environmentally-friendly
practices*

Donations

*Soil, waterwise plants, succulent cuttings, natural design elements
(rocks, pebbles, wood slices, pavers)*



TALENT SHOW

In the last week of Term 2 we will hold our annual KS2 Talent Show. This year we won't be able to gather together to watch a live performance, so as a Key Stage we'll watch video performances instead.

If your child would like to take part, he/she must sign up with me next week. I will be on the KS2 playground each morning before school starts. I won't be accepting parent email requests – your child must be brave enough to sign up themselves! If your child signs up, I'll send you an email to confirm details.

If there is a song involved, please ensure that the lyrics are suitable for primary school children.

KS2 TIMINGS

Mornings

7:15-7:40 Morning temperature check. *Playground supervision starts at 7:30*

7:40 Children go to classrooms. **Registration starts at 7:45**

Afternoons

Week beginning 15th February & 22nd March:

Mon-Thurs

14:10 Year 5 & 6

14:15 Year 3 & 4

Fri

13:30 Year 5 & 6

13:35 Year 3 & 4

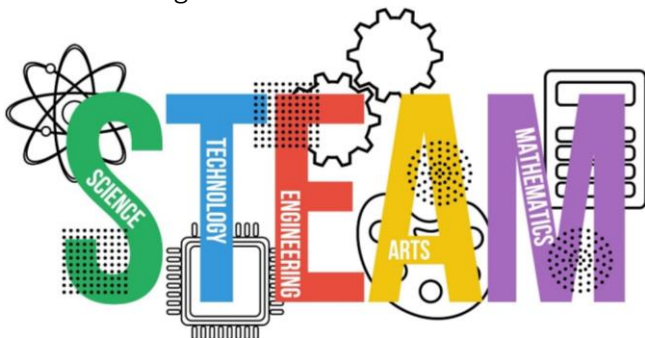
*Siblings meet up at classroom – please collect for the **later** finish time so you don't block the drive through system.*

Weeks beginning 22 Feb, 1 March, 8 March, 15 March:

	Mon	Tues	Wed	Thurs	Fri
Y3	14:15	15:15	14:15	14:15	13:35
Y4	14:15	14:15	14:15	15:15	13:35
Y5	14:10	15:15	14:15	14:15	13:30
Y6	14:10	14:10	14:10	15:15	13:30

STEAM CHALLENGE

This year we are focusing on STEAM across the school.



Mr Tait & Mr Jadezweni in KS3 have set us all a STEAM challenge!

[Click here to watch the video](#) and find out more about it.

KS2/ISCT OUTREACH

Last year we pressed pause on our community and environmental outreach initiatives but we're happy to report that we will be collecting the following items again:

Eco bricks

We have found a drop-off point so we can get our ecobrick collection up and running again. Read about [how to make an ecobrick here](#).

Clothing donations (U-Turn)

Please donate clean second hand clothes. There is a white, clearly labelled bin near reception for donations.

Tinned food

Although Food Forward is no longer working with schools, we are hoping to partner with Constantia CAN, to support with tinned food donations for their community support programmes. *TINS ONLY – no plastic or paper containers*

Bread tags

[Bread tags](#) collected at Woodland Heights will be sent down to the Struben campus.